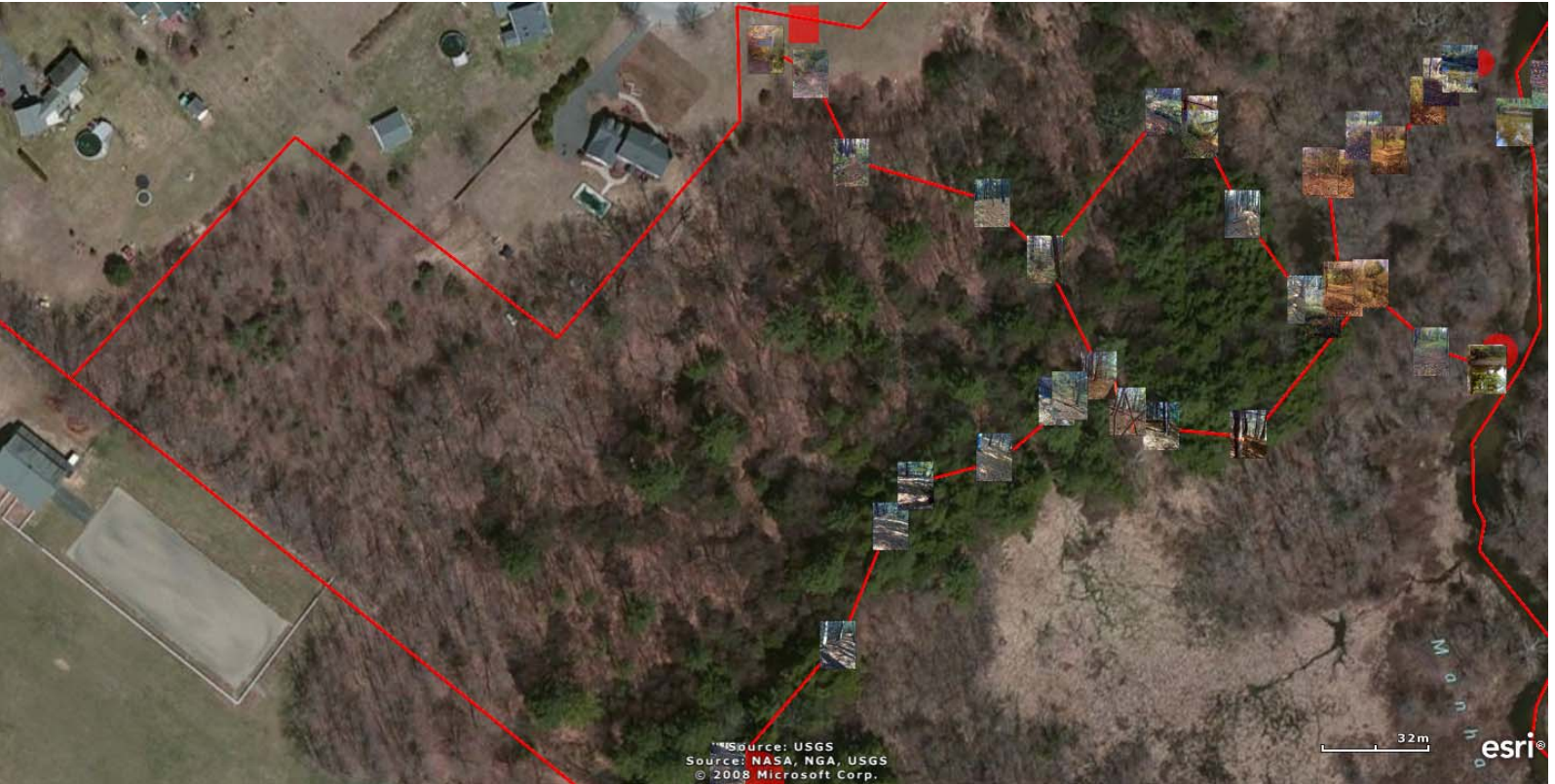


## Whittemore and Pomeroy Meadow ConCom Areas Integrated Trail



This trail begins at the Meadow Lane entrance to the Whittemore trail network and travels to the Southampton edge of the Manhan River. By crossing over the Manhan River path enables the hiker to enter the Beckley Trail recently developed by the Pascommuck Land Trust in Easthampton and ends at the entrance off of Ranch Street in Easthampton.

## Whittemore Conservation Area Trail Network



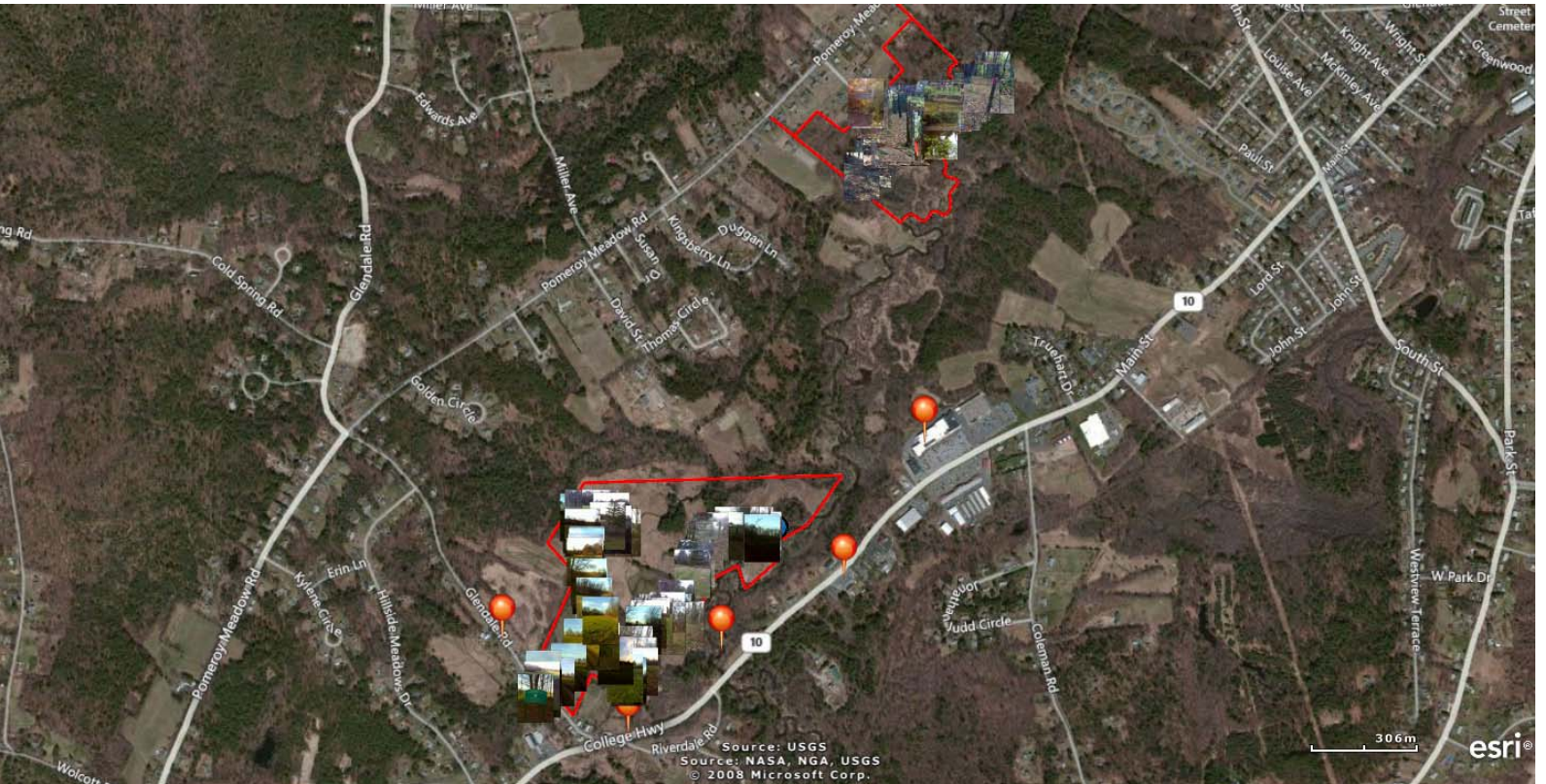
The trail has several branches:

- Branch One is from the trail head leading to the Sczcypta farm ConCom area.
- Branch Two is from the trail head leading to the vernal pool.
- Branch Three is from the vernal pool to the trail leading to the old bridge crossing the Manhan River.
- Branch Four is from the trail head leading to the intersection with Easthampton's Beckley Trail.
- Branch Five is by wading across the Manhan River (at some point a bridge may be built) and following the Beckley Trail to Ranch Lane in Easthampton.

Branch One is from the Whittemore trail head leading to the Szczypta farm ConCom area.



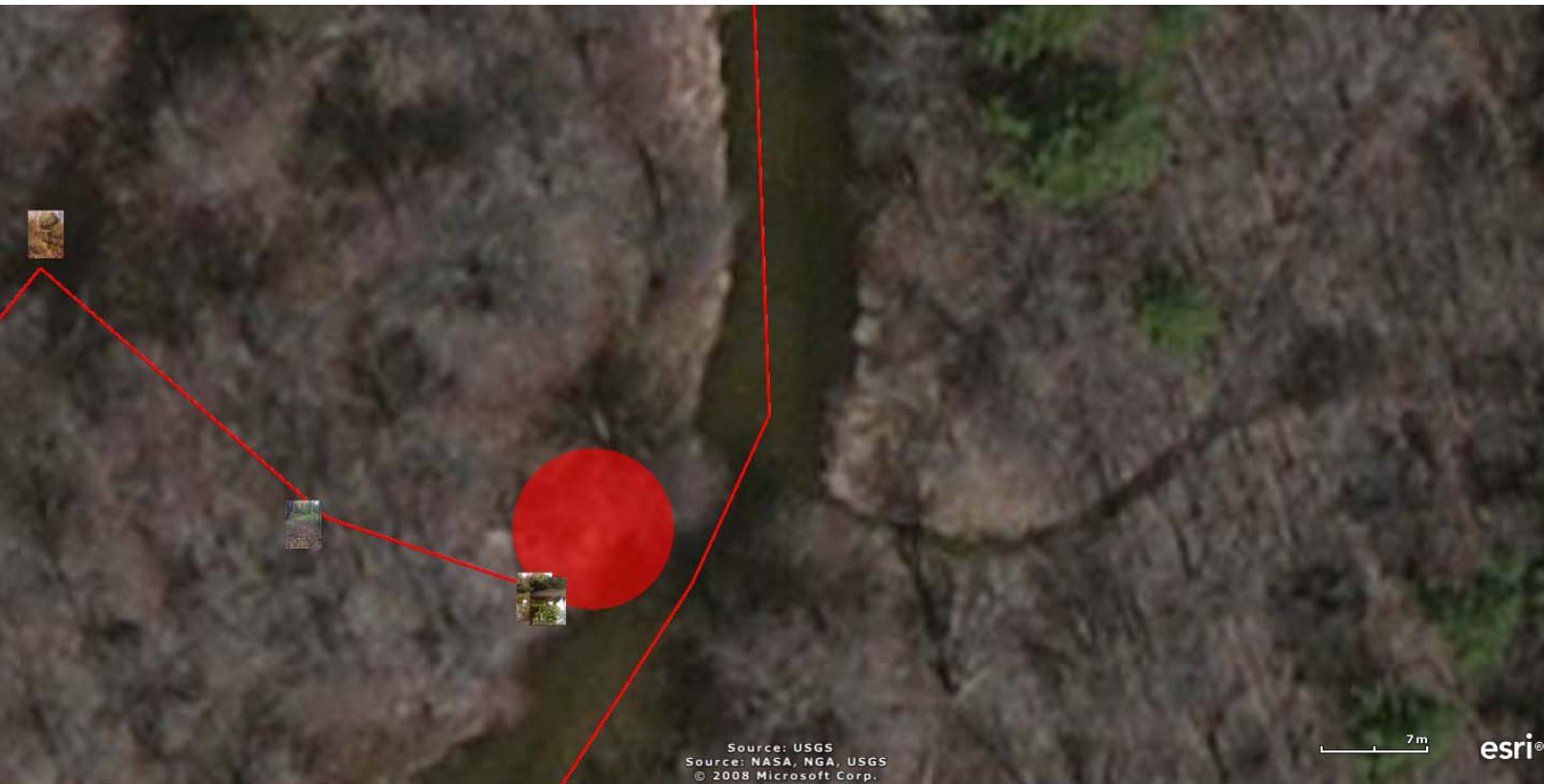
## Szczypta Farm Conservation and Whittemore Conservation Areas Outlined in Orange



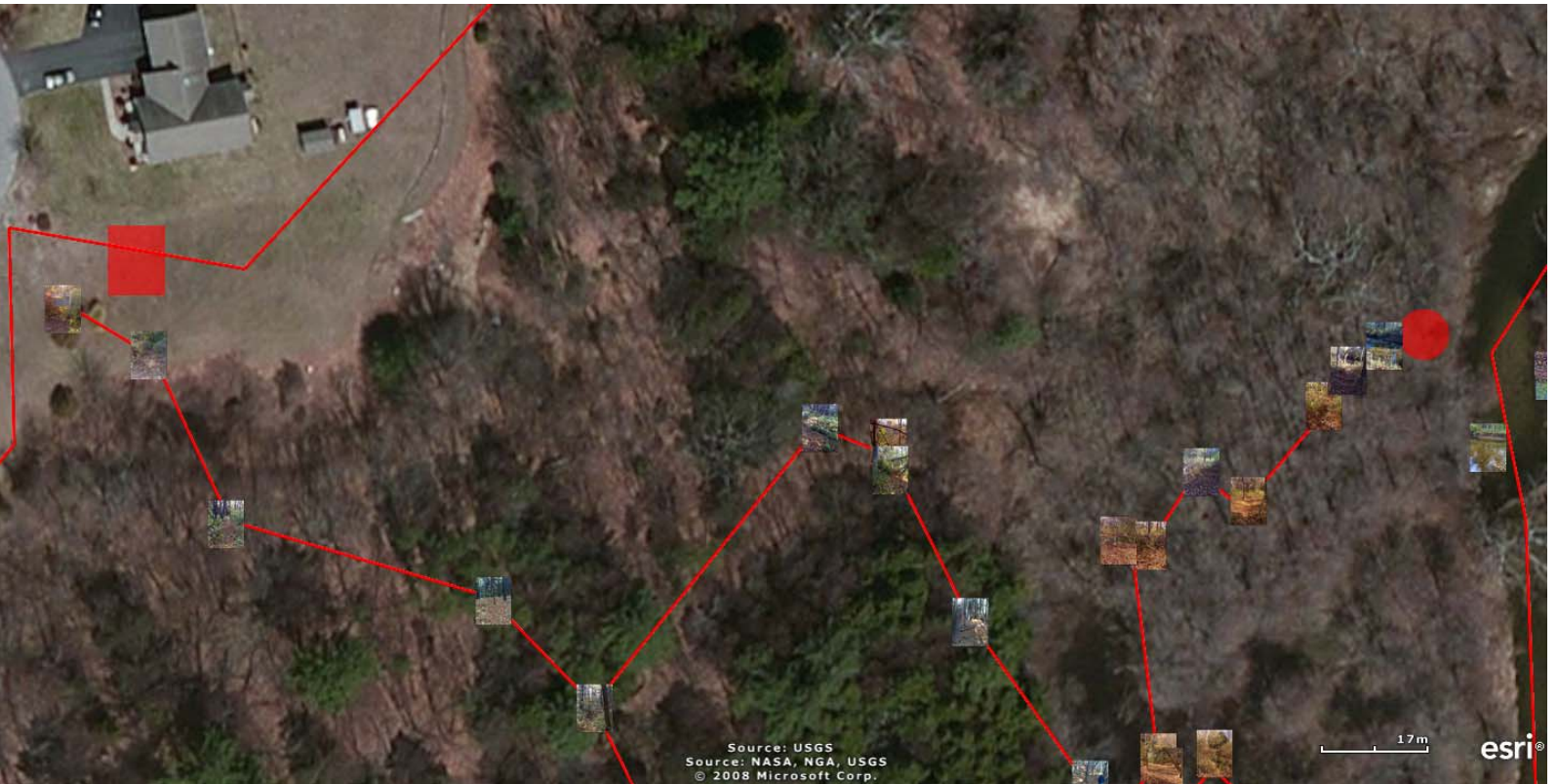
Branch Two is from the Whittemore trail head leading to the vernal pool.



Branch Three is from the vernal pool to the trail leading to the old bridge crossing the Manhan River.



Branch Four is from the trail head leading to the intersection with Easthampton's Beckley Trail.



Branch Five is by wading across the Manhan River (at some point a bridge may be built) and following the Beckley Trail to Ranch Lane in Easthampton.

